



KCNQ2/3/4/5 (phospho Thr217/246/223/251) Polyclonal Antibody

| | |
|---------------------------|---|
| Catalog No | YP-Ab-16354 |
| Isotype | IgG |
| Reactivity | Human;Mouse;Rat |
| Applications | WB;IHC;IF;ELISA |
| Gene Name | KCNQ2 |
| Protein Name | Potassium voltage-gated channel subfamily KQT member 2 |
| Immunogen | The antiserum was produced against synthesized peptide derived from human Kv7.3/KCNQ3 around the phosphorylation site of Thr246. AA range:191-240 |
| Specificity | Phospho-KCNQ2/3/4/5 (T217/246/223/251) Polyclonal Antibody detects endogenous levels of KCNQ2/3/4/5 protein only when phosphorylated at T217/246/223/251. |
| Formulation | Liquid in PBS containing 50% glycerol, 0.5% BSA and 0.02% sodium azide. |
| Source | Polyclonal, Rabbit,IgG |
| Purification | The antibody was affinity-purified from rabbit antiserum by affinity-chromatography using epitope-specific immunogen. |
| Dilution | IHC: 1/100 - 1/300. ELISA: 1/20000.. IF 1:50-200 |
| Concentration | 1 mg/ml |
| Purity | ≥90% |
| Storage Stability | -20°C/1 year |
| Synonyms | KCNQ2; Potassium voltage-gated channel subfamily KQT member 2; KQT-like 2; Neuroblastoma-specific potassium channel subunit alpha KvLQT2; Voltage-gated potassium channel subunit Kv7.2; KCNQ3; Potassium voltage-gated channel subfamily KQT me |
| Observed Band | |
| Cell Pathway | Cell membrane ; Multi-pass membrane protein . |
| Tissue Specificity | In adult and fetal brain. Highly expressed in areas containing neuronal cell bodies, low in spinal cord and corpus callosum. Isoform 2 is preferentially expressed in differentiated neurons. Isoform 6 is prominent in fetal brain, undifferentiated neuroblastoma cells and brain tumors. |
| Function | alternative products:Additional isoforms seem to exist,disease:Defects in KCNQ2 are the cause of benign neonatal epilepsy type 1 (EBN1) [MIM:121200]. Benign neonatal epilepsy is characterized by clusters of seizures occurring in the first days of life. Most patients have spontaneous remission by 12 months of age and show normal psychomotor development. The disorder is distinguished from benign familial infantile seizures by an earlier age at onset.,disease:Defects in |



KCNQ2 are the cause of benign neonatal epilepsy with myokymia (EBNMK) [MIM:606437]. EBNMK is a syndrome characterized by benign neonatal convulsions followed later in life by myokymia. Defects in KCNQ2 are the cause of myokymia isolated type 2 (MK2) [MIM:606437]. Myokymia is a condition characterized by spontaneous involuntary contraction of muscle fiber groups that can be observed as vermiform movement of the overly

Background

The M channel is a slowly activating and deactivating potassium channel that plays a critical role in the regulation of neuronal excitability. The M channel is formed by the association of the protein encoded by this gene and a related protein encoded by the KCNQ3 gene, both integral membrane proteins. M channel currents are inhibited by M1 muscarinic acetylcholine receptors and activated by retigabine, a novel anti-convulsant drug. Defects in this gene are a cause of benign familial neonatal convulsions type 1 (BFNC), also known as epilepsy, benign neonatal type 1 (EBN1). At least five transcript variants encoding five different isoforms have been found for this gene. [provided by RefSeq, Jul 2008],

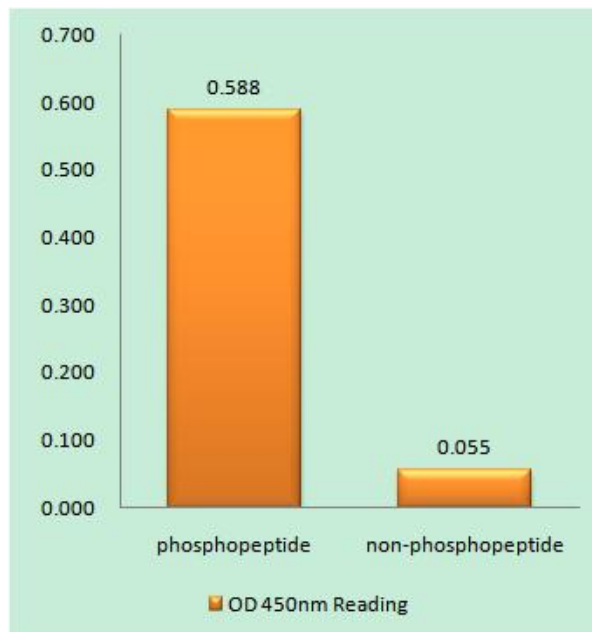
matters needing attention

Avoid repeated freezing and thawing!

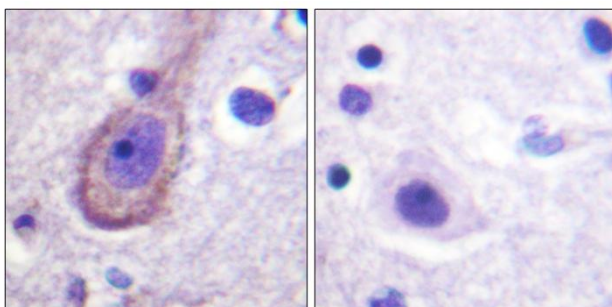
Usage suggestions

This product can be used in immunological reaction related experiments. For more information, please consult technical personnel.

Products Images



Enzyme-Linked Immunosorbent Assay (Phospho-ELISA) for Immunogen Phosphopeptide (Phospho-left) and Non-Phosphopeptide (Phospho-right), using Kv7.3/KCNQ3 (Phospho-Thr246) Antibody



Immunohistochemistry analysis of paraffin-embedded human brain, using Kv7.3/KCNQ3 (Phospho-Thr246) Antibody. The picture on the right is blocked with the phospho peptide.